



# MARUYAMA®

## MM300 MISTER

### Commercial-Grade Backpack Mist Blower

- ◇ Powerful, LIGHTWEIGHT mister / blower with superior weight balance for ease of use, handling and comfort - Pistol throttle
- ◇ Very effective misting for fertilizing lawns, gardens and crops as well as for mosquito and insect control as a fogger
- ◇ Low vibration & sound, COMMERCIAL-GRADE Maruyama engine
- ◇ Functions as a blower when tank is empty
- ◇ Even distribution of chemicals



#### SPECIFICATIONS: MM300 MIST BLOWER

Configuration	Mist Blower (Optional Fogger w/Attach)
Engine	Maruyama 2-cycle CE300
Displacement	30.1 cc / 30.1 mL
Dry weight (lb/kg)	15.65 lbs / 7.1 kg
Dimensions (LxWxH)	13.6x15.6x23.6 in / 345x395x600 mm
Fuel tank capacity	16.9 oz / 0.5 liters (uses 50:1 fuel mix)
Chemical tank capacity	3.9 gallons / 15.0 liters
Standard nozzle droplets	55-64 micron
Max. discharge volume	0-0.79 gal/min / 0-3.0 L/min
Number of flow settings	Variable
Recoil starter system	standard
CARB&EPA compliant	YES
Commercial warranty	IRON 5-yr™
Item number	352799



#### MM300

MISTER  
BLOWER  
& Optional  
ULV-FOGGER



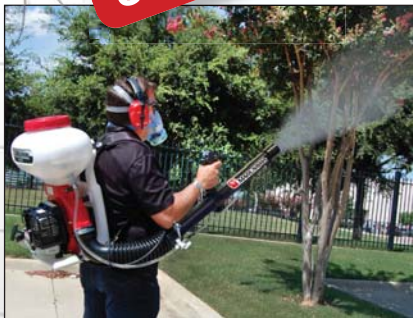
**URGENT!**

## MM300 ULV-FOGGER (with optional fogger attachment)

### Disease Control with Ultra-Low-Volume SUB-25 MICRON Droplets

The optional **ULV-FFB FOGGER Attachment** on the MM300 is an excellent tool to help alleviate the spread and control of disease-causing mosquitoes.

This forward-facing fogger produces **Certified SUB-25 micron droplets** which have long hang times above water, dense brush, etc., thus eliminating more flying insects than sprayers do.



EFFECTIVE  
DISEASE  
CONTROL  
FOGGING!!



MADE  
IN JAPAN



550 Aero Lane  
Sanford, FL 32771  
**(800) 367-0659**

info@myadapco.com www.myadapco.com

Jan2017

[www.maruyama.com](http://www.maruyama.com)